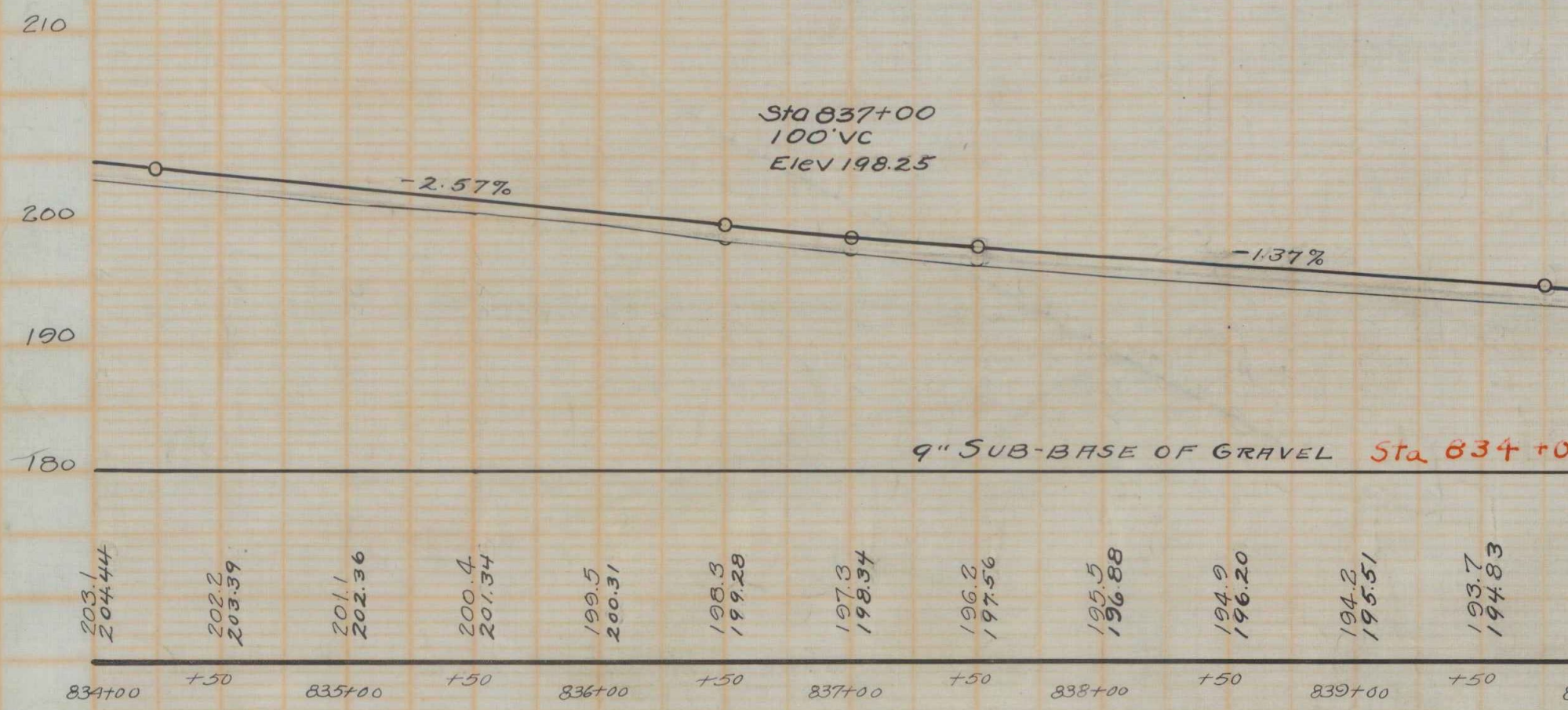
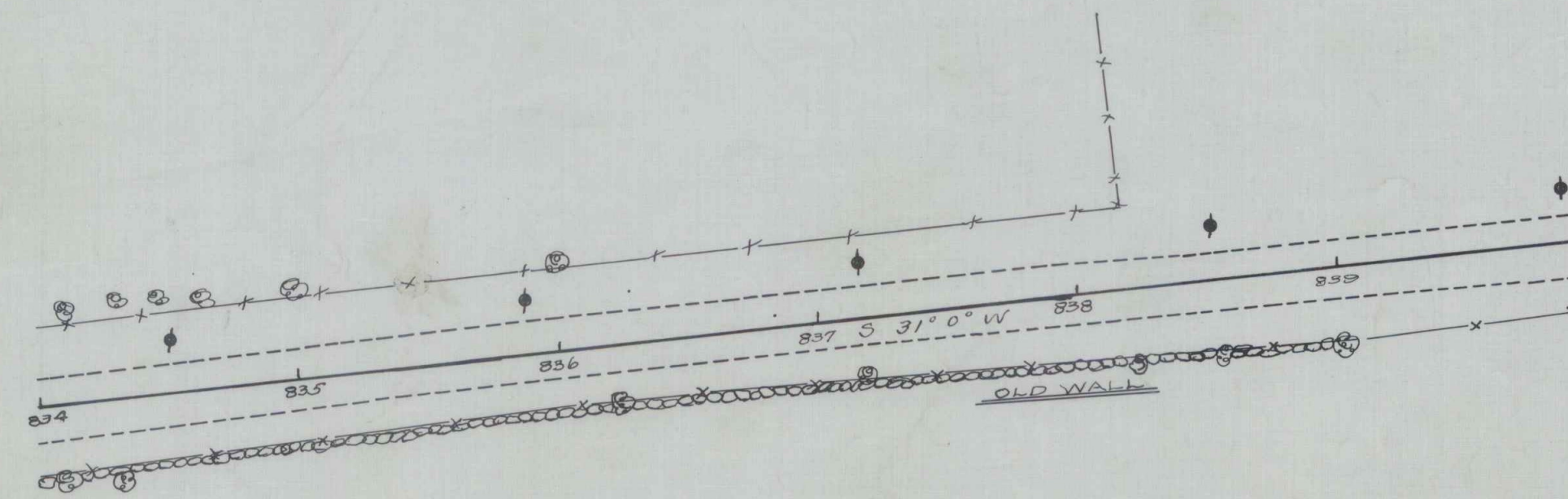


WOOD GUARD RAIL REQUIRED

LEFT		Length	ft
Sta 842+67 to 842+33			
" 835+28 " 836+12		24 "	
" 841+08 " 841+24		24 "	
RIGHT		Length	ft
Sta 842+67 to 842+33			
" 835+28 " 836+12		24 "	
" 841+08 " 841+24		24 "	

CABLE GUARD RAIL REQUIRED

LEFT		Length	ft	Sta
Sta 842+67 to 841+44				
RIGHT		Length	ft	Sta
Sta 842+67 to 841+44				



B.M. No. 108 Spike in 15' Elm Right of Sta. 841+16 Elev. 190.83